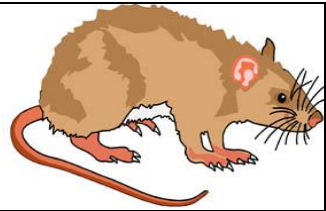




**Pesticide Safety
Data Sheet
Vertebrates**



This leaflet contains important safety information about pest control treatment. Please keep this leaflet readily to hand until the treatment has been finished and all rodenticides or traps are removed by our pest technician

This data sheet lists all our products. The pest technician will tick the box next to the name of each product used on your job

- The only important risk for any of these rodenticides is accidental ingestion by children or pet animals.
- Simply touching or picking up any of the bait is very unlikely to cause harm.
- All rodenticides incorporate a bitter taste agent and a warning dye which may cause blue/green staining around the mouth
- Do not touch any spring trap. The trap will go off instantly and could cause serious damage to your fingers or to a pet animal
- **Traps will normally kill a pest animal instantly, but if you are aware of an animal being trapped and in pain please phone our local office at once – we will send someone (or give advice if this is appropriate).**

IN CASE OF ACCIDENTAL INGESTION, GO AT ONCE TO YOUR NEAREST HOSPITAL ACCIDENT AND EMERGENCY UNIT, AND TAKE THIS LEAFLET WITH YOU.

IF POISON IS EATEN BY A PET ANIMAL SEEK IMMEDIATE VETERINARY ADVICE

SEE OVERLEAF FOR FIRST AID AND MEDICAL INFORMATION

<p>Local Office</p>	<p>Head Office</p> <p>SDK (Environmental) Ltd Accounts & Admin Office Edginswell Lane Torquay TQ2 7JF</p> <p>Phone : 0845 757 3268 Fax 0870 240 0450</p>
<p>www.sdkenvironmental.com</p>	

Pest Op to tick product used and initial	RODENTICIDE or TRAP TRADE NAME	ACTIVE INGREDIENT
	Neosorexa Bait Blocks	0.005% Difenacoum in a wax block
	Neosorexa Bait	0.005% Difenacoum in a cut wheat bait
	Neosorexa Pasta Bait	0.005% Difencacoum in a blue pasta bait
	Ratak Wax Blocks	0.005% Difenacoum in a wax block
	Roban Pasta Bait	0.005% Difencacoum in a blue pasta bait
	Roban Octa Blok	0.005% Difenacoum in a wax block
	Sorexa Gel	0.005% Difenacoum in a green gel
	Sorexa D Mouse Bait	0.005% Difenacoum in a blue/green canary seed base
	Brodifacoum Bait	0.002% Brodifacoum in a cut wheat bait
	Brodifacoum Wax Blocks	0.002% Brodifacoum in a wax block
	Sorex Checkatube	Plastic tube containing 2 wicks each dosed with 1.25 gm Brodifacoum at 0.2% w/w. The wicks are not readily accessible to animals other than mice
	Deadline	0.005% Bromadiolone in a whole grain base
	Deadline Rat Bait Blocks	0.005% Bromadiolone in a round wax block
	Deadline Mouse Bait Blocks	0.01% Bromadiolone in a triangular wax and cereal block
	Deadline Contact Dust	0.15% Bromadiolone in a blue dust
	Deadline Liquid	0.1% Bromadiolone (as concentrate) 0.005% Bromadiolone as made up and left on premises
	Tomcat 2 Blox	0.005% Bromadiolone in a wax block
	Warfarin	0.02% Warfarin in a wholegrain wheat base. Used only in house lofts against Squirrels
	Detex Blocks	Bait block used to check if rodents are present - CONTAINS NO PESTICIDE and is NON TOXIC
	Fenn Trap	These contain no rodenticides, but there is a danger of crushed or broken fingers if a trap is touched. See advice on back page of this leaflet.
	Breakback Trap	
	Cage Trap	There is no risk to non-target species

FIRST AID MEASURES - RODENTICIDES

Eyes Wash out eye with plenty of water. Obtain medical advice if necessary

Skin Wash skin with soap and water

Ingestion Wash out mouth with water. Do not induce vomiting. Obtain medical attention

Inhalation Remove from exposure. Obtain medical advice if symptoms develop

IN CASE OF ACCIDENTAL INGESTION, GO AT ONCE TO YOUR NEAREST HOSPITAL ACCIDENT AND EMERGENCY UNIT, AND TAKE THIS LEAFLET WITH YOU.

IF POISON IS EATEN BY A PET ANIMAL SEEK IMMEDIATE VETERINARY ADVICE

ADVICE TO DOCTOR

All of the above rodenticides are anti-coagulants.

Any signs of poisoning are unlikely to occur until 12 - 18 hours after ingestion. Thereafter they will develop progressively and may rapidly appear. Clinical signs result from an increased bleeding tendency and include an increase in prothrombin time, bruising easily, blood in the stool or urine, excessive bleeding from minor cuts and abrasions, pale mouth and cold gums, anorexia and general weakness. More severe cases of poisoning include haemorrhage (usually internally) and shock.

In case of suspected poisoning, determine prothrombin times not less than 18 hours after consumption. If elevated administer vitamin K1 and continue until prothrombin times normalise. Continue determination of prothrombin times for 3 days after withdrawal of treatment and resume treatment if elevation occurs in that time.

FOR FULL INFORMATION CONTACT YOUR NEAREST POISONS INFORMATION CENTRE OR REFER TO THE LEAFLET "The Treatment of Anticoagulant Rodenticide Poisoning "

TRAPS - SAFETY ADVICE

DO NOT TOUCH A SET TRAP. DO NOT ALLOW PET ANIMALS ACCESS TO TRAPS



Fenn Traps (for Squirrels and Rats)

Fenn traps have very strong spring jaws, and can damage fingers if they are caught in the trap. We will only use traps in a safe location such as a loft or enclosed building, and the technician will give you advice when he sets the trap. **Fenn traps are very sensitive and will snap shut on a very light touch**



Breakback Traps (Large for rats : small for mice)

Large breakback traps have very strong spring jaws, and can damage fingers if they are caught in the trap. We will only use traps in a safe location such as a loft or enclosed building, and the technician will give you advice when he sets the trap. The small breakback trap used for mice is less powerful, but could still harm a child's finger.

Cage Traps

There is no danger to any other species or to children from the use of cage traps – there is nothing in the trap which could cause harm. In the very remote possibility that a pet hamster, rat, or kitten enters the trap, the method of release by opening the door of the trap is obvious

FIRST AID MEASURES - SPRING TRAPS

If a pet animal or your fingers get caught in a trap, then release them by forcing the trap open - the operation is obvious. Fenn Traps may require considerable force to open the jaws

For animals, seek advice from your vet.

For human injury, wash and inspect the wound. Seek medical advice if necessary. If the skin is broken, or if any part of the wire mechanism of the trap has punctured a finger, go to your nearest Hospital Accident Department and ask about Tetanus vaccination. Tetanus is a bacteria which is common in the soil, and can cause serious disease if carried into the body by a puncture wound.

ADVICE TO DOCTOR

Traps work by a rapid spring loaded crushing and scissors action. Examine damaged tissue accordingly. Traps may have been used previously in a different area such as farmland, gardens, or woodland. Traps are cleaned, but not sterilised between different jobs. Consider the possibility of tetanus infection.